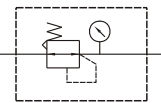


# MAR900 series

AIR UNITS (R. UNIT)



Symbol:



- MAR900 reducing the system pressure to a desired level and maintain it at a constant level despite change in inlet pressure and changes in downstream flow requirements.

## Specification:

Model	MAR900
Bore No.	40A
Port size	PT 1 1/2
Medium	Air
Operating pressure range	0~9.9 kgf/cm <sup>2</sup> (0~0.99 MPa)
Regulation pressure range	0~8.8 kgf/cm <sup>2</sup> (0~0.88 MPa)
Ambient temperature	0~+80°C (No freezing)
Standard nominal flow rate (※)	11000 ℓ/min
Attachment	Pressure gauge
Weight	1208 g

Order example:

**MAR900 — 40A — BSP**

MODEL

BORE SIZE  
40A: PT 1 1/2

PORT THREAD  
Blank: PT thread  
BSP: BSP thread  
NPT: NPT thread

※ Flow is at 10kgf/cm<sup>2</sup> supply pressure and 1kgf/cm<sup>2</sup> pressure drop of 6kgf/cm<sup>2</sup> of secondary pressure.

